

March 2024

the **Bridge**

THIS ISSUE IS

NANTES

Solicitors & Notaries

SPONSORED BY

A community magazine for Bridport supported by the Anglican Church

THE PARISH OF BRIDPORT

Team Rector The Revd Canon Deb Smith
 deb@bridport-team-ministry.org / 301457
 Day off Friday

Associate Priest The Revd Lorna Johnson
 lornajohnson@bridport-team-ministry.org
 538519 / 07501 408221 Day off Friday

Permission to officiate

The Revd Janis Moore Day off Wednesday
 janis@bridport-team-ministry.org / 425644

The Revd Ann Ayling Day off Wednesday
 annayling7@gmail.com / 424896

The Revd Dan Shackell
 danshackell@gmail.com / 426514

The Revd Philip Ringer (Hospital Chaplain)
 philipringer@aol.com / 425774

The Revd John Rees
 revjohnrees@gmail.com / 458756 / 07340 589375

Licensed lay ministers

Graham Purse 423220

Peter Wright 456967

Lay pastoral assistants

Caroline Cooke 07859 803734

Diana Wright 456967

If you cannot get to church and would like home communion or a visit, please contact one of the lay pastoral assistants.

Lay worship leaders

Martin Whiting and James Craddock

Team Administrator Dianne Sinclair
 di@bridport-team-ministry.org / 424747
 Postal address: The Administrator, c/o The Rectory,
 84 South Street, Bridport DT6 3NW

Secretary to the PCC Bridget Trump
 pcc@bridport-team-ministry.org / 459875

Churchwardens

Michele Craddock 458725

Lesley Hill 422417

Bridget Trump 459875

John Adams 425766

churchwardens@bridport-team-ministry.org

HALL BOOKINGS**St Swithun's church hall**

Visit www.bridport-team-ministry.org/hall-bookings
 or contact Anne Ansell anne.ansell.email@gmail.com

Bothenhampton village hall Heather Purse
 heatherpurse@yahoo.co.uk 423220

Bradpole Forsters village hall Jane Bryant
 oxyedaisy101@gmail.com 427493

St Mary's Church House Hall Monty Crook
 423442

Walditch village hall Jane Weyman
 janeweyman@btinternet.com 424299

Christian Fellowship, King St Jackie Edwards
 538028

United Church Sue Herman
 422598

Bridport Food Bank Carrie Gamble
 cupboardlove.bridport@gmail.com 07443 596096

OTHER CHURCHES IN THE AREA

Beacon Church, Priory Lane 456031 office

The Christian Fellowship 458227

St Mary & St Catherine (Roman Catholic)

Monsignor Keith Mitchell 424754 presbytery
 bridport@predtr.org.uk 422594 office

Bridport Quaker Meeting

clerka@bridportquakers.org

Room hire enquiries roomhire@bridportquakers.org

United Church (Methodist & United Reformed)

The Revd Jane Wilson 341159

Sue Herman, administrator 422598

All phone numbers are Bridport (01308) unless otherwise stated.

**The advertising and copy deadline
 for the April 2024 issue is 5pm
 on Monday 11 March**

The Bridge Editor & production: Olivia Daly 07710 805029 editor@thebridgemagazine.org
 Advertising: Chris Senior (Mrs) 427451 advertising@thebridgemagazine.org

Advertising rates appear at www.thebridgemagazine.org/advertising. If you have an idea for an article, please contact the editor. Otherwise send copy to parish editors (details in Parish Pages) at least three days before the deadline, or a week for handwritten/typed copy. We cannot guarantee to include unsolicited contributions.

Opinions expressed in The Bridge are not necessarily those of either the editorial team or the clergy. While we make every effort to ensure the accuracy of the magazine's contents, we cannot accept responsibility for information given or claims made by our contributors or advertisers.

Let's be present and pay attention to the journey

Life is about the journey, not the destination, according to Ralph Waldo Emerson (among others).

The funny thing is, though, we won't truly understand how true these words really are until we've taken the journey. Or as a character in the sitcom *The Office* says: "I wish there was a way to know you're in the good old days before you've actually left them."

When it comes to the journey to Easter, we could see it as simply a mad scramble along the difficult road of Lent, a scramble we want to be over as quickly as possible because we just want to get there. But as in so much of life, the journey isn't simply the fastest route to the destination. Isn't it more about what happens to us and those we travel with along the way? *Life is the journey.*

In the season of Lent, we have had an opportunity to focus on what it means to be on the journey – or, in the words of the poet Mary Oliver, the chance to:

"Pay attention.

Be astonished.

Tell about it."

Paying attention to the journey is surely about openness and receptivity to everything around us. It's less about what we do with our eyes and ears, and more about what we do with our hearts. It's staying awake to and aware of our needs and hopes and those of others, the beauty and disfigurement of our lives and world, the gifts and the callings coming to us. It means

taking it all in and closing our eyes to nothing.

Paying attention is what keeps us in the present moment. The present moment is the only one we have. It's the place where Jesus shows up, where meaning is made, where relationships are restored, hearts are healed, and life is lived. It's where we see how all things are connected.

If we just hurry along, looking ahead to where we think we are going instead of being astonished by the journey itself, we miss the reason for travelling: we miss life, the life of wholeness, meaning, and abundance – isn't that the life you want for yourself, others, our town, the world?

The journey of Easter isn't about answering questions, eliminating doubt, or making judgements. It's more about imagination, possibilities, and hope. It's the travelling itself that opens and enlarges life, opens us, and enlarges our compassion and love.

And when we do get to Easter Sunday, we understand once more that the journey is not over just yet... the journey continues, and we want to tell anyone who will listen what that means, as we say:

Alleluia, he is risen!

He is risen indeed, Alleluia!

Canon Deb Smith



Canon Deb Smith

In memoriam Coral Hatton

It was with huge sadness and shock that we heard the news of the sudden death of Coral Hatton on 29 January.

Coral, who had served this parish and many neighbouring villages since 2006 as a licensed lay minister, was deeply involved in serving others and God, most especially at Holy Trinity Bradpole, and for many years before that too. She was our safeguarding lead and ran countless courses, as well as being a mainstay of the music group, the ministry of wholeness and healing, planning and leading worship and

simply being a listening ear and support to so many.

Coral worked as a teacher and then as a social worker and had a heart for those on the margins. She was compassionate, creative and committed to those she felt called to serve.

Poignantly she wrote the leader column for the February Bridge magazine and spoke of the hope she found in looking ahead to the first signs of spring, to longer days to come, more light, new life. In memory of Coral, let me share one of the quotations she used:

"The good you do today will



often be forgotten; do it anyway. Give the best you have, and it will never be enough; give your best anyway. In the final analysis, it is between you and God; it was never between you and them anyway." (Mother Teresa)

Thank you, Coral. May you rest in peace and rise in glory.

Canon Deb Smith

St Swithun's Church Hall, Allington

FUN QUIZ

Friday 12 April at 7pm

Doors open at 6.30pm

Teams of six (max)

£5 per head in cash on the door
for church funds

Bring your own nibbles and drinks
During the break there will be standing
bingo, a raffle and refreshments

ALL WELCOME • Extra parking at Amsafe

Book in advance: 07859 803734

CANTAMUS presents

Spring, clad all in gladness

Beautiful choral music for the season

Holy Trinity Church, Bothenhampton
Saturday 9th March at 7pm

Tickets £12 on the door (cash or card)
Refreshments will be served

www.cantamus-dorset.org

• Free film show •

Father Stu

A brutish boxer changes course after a
near-death accident – but it's not easy!
A true tale of faith, hardship and forgiveness

Easter Saturday, 30 March at 11am
Running time two hours

Free cafe (hot drinks and cakes) from
10am until the end of the film

**Bridport Christian Fellowship,
East Street car park, DT6 3QE**

More information on our website
www.bridportchristianfellowship.org
or phone Penny on 07941 425589



**Bridport Christian Fellowship
invites you
to come and
listen to**

Henry & Lydia George

**They will be sharing and there will be an
opportunity for ministry & prayer on both days.
They will be speaking on the year of Jubilee**

**Saturday 9 March at 7pm
Sunday 10 March at 10.30am**

www.bridportchristianfellowship.org

Henry is the Ministry Team Leader and has served in several Ichthus roles across 16 years – leading congregations, overseeing worship, heading up live-streaming and church planting in Bangkok. Henry now leads the Ichthus Ministry Team and is passionate about Ichthus Theology and 'Church on the Streets'. He graduated from RadNet in 2007.

Lydia is Operations Manager and Leader of Ichthus Belvedere congregation and serves on the Ichthus Management Team. She spent four years in Thailand, and before that led Ichthus Lee Green congregation with Henry. She is passionate about evangelism and reaching out to grow the church through new converts. Lydia graduated from RadNet in 2007.

Age UK launches a new dementia group

Age UK North, South & West Dorset has unveiled its newest initiative, the 'Forget Me Not' dementia support group, which will start on Thursday 14 March.

The gathering aims to provide support for individuals living with dementia and their caregivers. It will take place on the second and fourth Thursdays each month, alternating with the Alzheimer's Society memory cafe that already runs on the first and third Thursdays. This schedule means there will be dementia support for the community across the whole month.

The new group will provide a welcoming environment where participants can share experiences and encourage peer support. Sessions will be a friendly space to socialise over refreshments, with activities, guest speakers, entertainment and support.

The introduction of the Bridport group follows Age UK's pilot group in Purbeck, which supported more than 60 individuals in its first year.

"I am excited that we are now getting this group up and running as I've seen first-hand how beneficial the Purbeck group has been," says Rachel Newman, Wellbeing team leader of Age UK North, South & West Dorset. "It has brought together support, activity, laughter and a real sense of community and I'm looking forward to seeing it do the same for Bridport."

Sessions will be held at Bridport Connect Day Centre, St Andrew's Road, 1.30–3pm. Cost £2.50 per person. For more information ring 01305 269 444.



A special award for The Living Tree's founder

Jo Millar – chair of Bridport cancer charity The Living Tree – has received the With Ambition award from Macmillan Cancer Support. The award recognises someone who goes the extra mile and strives for better.

Jo (pictured) co-founded The Living Tree with Jo O'Farrell in 2012 and it has grown strong roots in the community, supporting anyone affected by cancer through activities, information and friendship.

www.thelivingtree.org.uk



PORTER DODSON

Commercial & Private Law

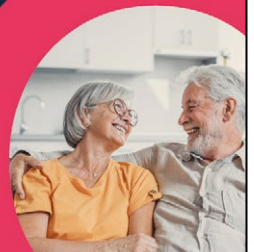
Complete legal support, every step of the way

- Buying or selling your **home**.
- **Wills** and lasting powers of attorney.
- Family, **divorce** and relationship breakdown.
- Buying, selling or developing **Commercial Property**.
- Running or selling a **business**.
- Rural estates, land and **agriculture**.

info@porterodson.co.uk



21 South Street,
Bridport, DT6 3NR
01308 555630



St John's West Bay: At the time of going to press, the electrical problems in the church are still being sorted out. The building is open to the public but services are taking place elsewhere, so please keep an eye on the noticeboard in the church for the latest information.

Jim Allen ROOFING & BUILDING

- New builds • Brickwork & stonework
- Blockwork & rendering • Guttering & UPVC
- Carpentry & property maintenance
- Roofing/re-roofs & repairs

01308 863809 | 07976 372045 | alljim996@aol.com
www.jimallenbuilding.co.uk

March 2024						
Date	St Mary's Bridport	St Swithun's Allington	Holy Trinity Bothenhampton	Holy Trinity Bradpole	St Mary's Walditch	St John's West Bay*
Sun 3 <i>3rd Sun of Lent</i>	8am BCP HC	4pm CC (hall)	10am Parish service of HC			
<i>Mon 4</i>						10am Morning Prayer*
<i>Tues 5</i>				2.30pm HC		
<i>Wed 6</i>	2.30pm HC					
<i>Thurs 7</i>		10am Eucharist			10am Morning Praise	
Sun 10 <i>4th Sun of Lent</i>	8am BCP HC 11am HC	9.30am Eucharist	11am Morning Praise	9.30am Morning Praise		11am HC*
<i>Mon 11</i>						10am Morning Prayer*
<i>Thurs 14</i>		10am Eucharist			10am Morning Praise	
Sun 17 <i>5th Sun of Lent</i>	8am BCP HC 11am Morning Praise	9.30am Eucharist 4pm Stations of the Cross	11am HC	9.30am HC 11.30am Bradpole Brunch (village hall)		11am Morning Praise*
<i>Mon 18</i>						10am Morning Prayer*
<i>Thurs 21</i>		10am Eucharist			10am Morning Praise	

HC = Holy Communion / BCP = Book of Common Prayer / CC = Contemplative Church

* see note on p5

Lent study groups in the Parish of Bridport

Join a group, or read and reflect at your own pace. The book is Tarry Awhile by Selina Stone.

Tuesdays, Holy Trinity Bradpole
10.45am–12.15pm on 5, 12 and 19 March.
Contact Martin Whiting on 424086

Wednesdays, The Woodman, South Street
7pm on 6, 13 and 20 March
Be ready to enjoy the pub atmosphere, have a drink and welcome others who may wish to join the conversation.
Contact Canon Deb Smith on 301457

Thursdays, St Swithun's hall
Over coffee at 10.45am on 7, 14 and 21 March. Straight after the service but open to all, not just those who come to worship.
Contact Kathrine O'Brien on 07940 384645

A time of reflective walking
Start at 10am on Thursday 21 March from St Mary's, South Street. The walk will be 60–90 minutes long.
Contact the Revd John Rees on 07340 589375



SERVICES FOR HOLY WEEK						
Date	St Mary's Bridport	St Swithun's Allington	Holy Trinity Bothenhampton	Holy Trinity Bradpole	St Mary's Walditch	St John's West Bay*
Sun 24 <i>Palm Sunday</i>	8am BCP HC 11am HC	9.30am Eucharist	11am Morning Praise	9.30am Morning Praise	11am HC	11am Morning Praise*
<i>Mon 25</i>				8pm Compline		10am Morning Prayer*
<i>Tues 26</i>			8pm Compline			
<i>Wed 27</i>					8pm Compline	
Thur 28 <i>Maundy Thursday</i>	7pm HC and foot washing	7pm HC and foot washing. Vigil until 10pm		7pm HC and foot washing		
Fri 29 <i>Good Friday</i>	2pm One-hour meditation	12 noon Stations of the Cross 2pm Good Friday Liturgy		12–3pm Three-hour meditation		
Sat 30 <i>Easter Eve</i>	8pm Easter Eve service. <i>Meet at 7pm for fish and chips around the bonfire</i>					2pm Service of wholeness and healing <i>To be held in Bridport Hospital's chapel</i>
Sun 31 <i>Easter Day</i>	8am BCP HC 10am HC	10am Eucharist	11am HC	10am HC	11am HC	6am Dawn service at East Pier 11am HC*

Can you help St Swithun's?

You may have noticed a shiny new defibrillator on the side of the hall at St Swithun's.

The church team has installed it for the benefit of the congregation, those who hire the hall and those who come on a Thursday to the Glut stalls.

Of course, everyone hopes it never needs to be used, but if and when it is required, it needs to be ready – and to achieve this, a volunteer is needed who is technically minded and prepared to maintain the machine. Ideally this person will live reasonably near the church.

Please call Yvonne Welch on 459587 for a chat if you think you could help.



Safeguarding vacancy

The Parish of Bridport is seeking to appoint a parish safeguarding officer (PSO) to work with the incumbent and the PCC to promote a safe environment and culture for children, young people and vulnerable adults.

This important role is a voluntary position. The PSO is the key link between the diocese and the parish on all safeguarding matters and seeks to ensure implementation of parish safeguarding policy in accordance with guidance from the House of Bishops.

A full role description is available from Team Rector Canon Deb Smith. Please email her at deb@bridport-team-ministry.org.

Eyes along the coast: the vital work of

Living in a coastal community, we're all familiar with the wonderful work of the RNLI and the Coast Rescue Teams. Many of us are involved with these valuable organisations, and some even serve as crew or rescue personnel. What you might not realise, however, is that there's a third link in the chain of services that help to keep everyone safe at the coast: the National Coastwatch Institution (NCI).

NCI is both a charity and a 'declared asset' of HM Coastguard, and it counts as one of the emergency services, operating under a memorandum of understanding that defines its relationship with the Maritime and Coastguard Agency. Its motto is 'Eyes along the coast', and this is exactly what its volunteer watchkeepers provide: equipped with binoculars, telescopes, and in some cases radar, they keep watch over stretches of coastline, beaches and estuaries.

Meeting an important need

Although standalone lookout points have existed around the British coast for centuries, NCI started nationally in 1994, following the tragic drowning of two fishermen in 1992 at Bass Point in Cornwall, within sight of a disused coastguard station. It now has 60 stations in England and Wales, staffed by

around 2,600 volunteers. A series of reorganisations of HM Coastguard, including a major streamlining in 2011, have seen that service moving into fewer, larger operations centres – currently just three along the south coast of England – and many of its former lookouts have been taken over by the NCI.

Lyme Bay is served by two NCI stations, at Burton Bradstock's Hive Beach and in Charmouth. The Hive Beach lookout opened in 2010, although in early 2014 a winter storm destroyed the original building – luckily unstaffed at the time – and it was replaced a couple of months later by the current, fully operational lookout. In 2016 one of the management team suggested adding a second Lyme Bay station, at Charmouth, and the trustees agreed. They decided to use an existing building, the Grade II listed octagonal structure on the foreshore by the Heritage Centre. It dates back to the Napoleonic Wars of the early 19th century and was built as a lookout station; over the years it has also been used as a Customs & Excise observation point, a military lookout during World War 2, and a beach hut.

The Charmouth lookout has space for just one NCI volunteer and is too small to be a station in its own right, so it operates as a 'satellite' to the Hive Beach lookout, and all Charmouth watchkeepers also work at Hive Beach. Both lookouts have

Declared Facility Status, which demonstrates to HM Coastguard that they have met the required operational standards.

Local knowledge

So what do NCI watchkeepers do? "Our volunteers are always on the lookout for something that just doesn't look right," says Judy Clarke, Station Manager, NCI Lyme Bay. "They need to be familiar with what's 'normal' around them, and report anything worrying to the coastguard. The changes to HM Coastguard saw the loss of much local knowledge – including, for example, people on site who knew the local, unofficial names for things – but happily NCI has brought a lot of that back."

Volunteers are expected to do a minimum of two watches each month. Watch times at both lookouts vary throughout the year but are a maximum of four hours. During the school holidays, watches are extended at both ends of the day; there's no RNLI lifeguard at either of these beaches so the NCI's role is particularly important during the long, light days in July, August and early September.

The volunteers – who wear a smart uniform – arrive at the lookout before their watch starts and one of their first tasks is to check in with the coastguard by phone, telling them how many volunteers are on duty and the

Words by Olujeta Duty



Nadiya Wynn 07800 712998
 nadiya@restorativebeing.co.uk
 www.restorativebeing.co.uk

Gentle Yoga, Mondays 9.30am - 11am
 St. Swithun's Church Hall, N. Allington, Bridport

Yin Yoga, Tuesdays 9.30am - 11am
 The Glow, St. Michael's, Bridport

Hatha Yoga, Tuesdays 6.30pm - 8pm
 St. Swithun's Church Hall, N. Allington, Bridport

1-2-1 Yoga Therapy
 The Glow, St. Michael's, Bridport and Online

Monthly Yoga Sessions to Relax & Restore
 Bridport and Litton Cheney

DORSET LOCKSMITH

Tel: 01305 250042

Locks · Safes · Keys

f the National Coastwatch Institution



The NCI's Lyme Bay lookouts at Hive Beach (right) and Charmouth



while the team from West Bay specialise more in rock rescue. All the agencies work together – and the NCI and

CRTs are volunteers. It's impressive what we can achieve together."

Want to get involved?

If this sounds like something you'd like to get on board with, you're in luck, because NCI is always looking for new volunteer watchkeepers. There's no upper age limit; volunteers just need to be able to access the lookouts on foot (the Hive Beach unit is at the top of some fairly rocky steps) and have good eyesight and hearing (corrected by glasses/

contact lenses and/or a hearing aid if necessary). New personnel receive all the training they need to use the charts and equipment and follow procedure. Once in the team, watchkeepers are also expected to help with fundraising activities, as each station is responsible for covering its own expenses. Events include coffee mornings and quizzes plus NCI stands at the Melplash Show and in Bucky Doo Square.

"Our volunteers come from all walks of life," says Judy. "We are mostly retired but some of the Lyme Bay watchkeepers are still working. You don't need any particular experience or skills, just a willingness to learn and to work as part of a team, and a desire to keep our community and visitors safe."

For info about volunteering with NCI, contact Judy Clarke: 07786 354403 / judy.clarke@nci.org.uk. You can also visit www.nci.org.uk or search 'National Coastwatch Institution' on Facebook. Visitors are welcome at the Hive Beach and Charmouth lookouts during opening hours (unless an ongoing incident is being dealt with).

NCI will have a stand in Bucky Doo Square, Bridport, on Wednesday 22 May.

station's opening hours that day. They also report the local weather every two hours. That way, if there's an incident, the coastguard knows what and who they have to call on at the site.

Other duties include manning the VHF marine traffic radio. Staff at both stations are available for anyone to contact during operating hours on Channel 65 for radio checks and queries about local conditions.

"NCI volunteers are often the first link in the chain of rescue: they report something to the coastguard, who decides what action to take," says Judy. "An incident on the water could result in the RNLI Lyme Regis lifeboat being called out and might involve the NCI volunteer 'conning' [directing] the lifeboat to the casualty over the radio. If it's a rockfall or an animal stuck on a cliff, on the other hand, they'll task the CRT [Coast Rescue Team]. The Lyme Regis CRT will attend incidents at Charmouth as they're specialised in mud rescue,

NCI has joined forces with the South West Coast Path

organisation to become an official 'Coast Path Passport' stamping point partner. In a scheme inspired by arrangements along the Camino de Santiago in northern Spain, path walkers can stop off at any NCI station along the 630-mile route to receive a stamp in their trail 'passport'. It's also an opportunity to spread the word about the work of both charities. There are more than 135 stamping points – including 24 NCI stations – along the path, which is the UK's longest and most popular National Trail.



Discover The Gethsemane Garments

This month Bridport United Church is hosting **The Gethsemane Garments**, an exhibition of four unique pieces of clothing (pictured) created by the Revd Peter Privett.

In liturgical colours that reflect the seasons of the Christian year, the garments include synthetic and natural fabrics sewn by machine and by hand, and a mix of dyed, painted and printed materials including beads, shells and bone. A number of biblical texts from the Old and New Testaments are stitched in.

The pieces explore the themes of pain, suffering, hope and resurrection central to the Passion and Resurrection of Christ. They speak to the human experience, touching the heart and spirit beyond words.

“There is no requirement to stand back, admire and reflect, but rather an invitation to handle each garment

and discover the texts,” says Peter. Visitors are invited to take time to look, ponder and touch the garments, discover the texts and use them as a tactile stimulus for reflection and prayer.



A 15-minute video of Peter talking about his creative processes will be shown on the hour each day from Tuesday to Saturday. On the Sunday there will be a worship service at 10.30am for an hour (all welcome).
Tuesday 5 March: 10am–2pm and 4–6pm
Wednesday 6 to Saturday 9 March: 10am–2pm
Sunday 10 March: 10am–12 noon
Admission free

Bridport Chamber Orchestra

SPRING CONCERT

St Swithun’s Church, Bridport
Sunday 24 March, 3pm

Conductor: David Hedges
 Leader: Alexandra Ennis

Rhosymedre – Vaughan Williams
 Serenade for Strings – Elgar
 Concerto for Oboe – Vaughan Williams
(soloist Izy Cheesman)

Divertimento – Gareth Walters
 Suite for String Orchestra – Frank Bridge

Tickets £12 (under-16s free)
 from The Book Shop,
 Bridport, orchestra
 members, or at the door.
 Tea and cakes will be
 served after the concert

 The Bridport Chamber Orchestra

Registered charity no. XT13407

Bridport Citizens Advice Needs You!

Volunteer Trustees from all backgrounds

If you want to give something back to your fantastic local community, then don't just think about it, call us now!

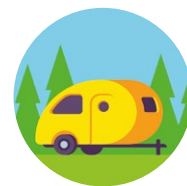
01308 456594
advice@bridport-cab.org.uk



 citizens advice

Registered charity number: 1101576

Exploring creativity through ‘serious play’ at art workshops: Mary Caddick



Mary Caddick trained in art and design before taking a sideways step into psychotherapy and exploring the therapeutic benefits of creativity. She runs workshops in creative process and self-expression, the latest of which is planned for this month in central Bridport.

We met Mary at her home to find out about her career and what inspires her to help people connect with and develop their creativity...

The Bridge: Mary, what brought you to Bridport?

Mary Caddick: I moved here 20 years ago when my son was a baby. A friend had suggested Bridport and it seemed an ideal place to raise a child. I'd been living in Berlin, where my son was born, and in London before that. I immediately loved the West Dorset landscape and I felt at home in Bridport. It feels similar to the Essex market town where I spent the second half of my childhood.

TB: How and why did you begin to explore the crossover between art and psychotherapy?

MC: My first degree was in 3D design at Central St Martin's in London, but at graduation I had already moved towards fine art. To support my studio work I started teaching part time in HE [higher education] and in a day centre. While teaching I soon witnessed the power of creativity. I realised I needed training to help people access and process their creativity,



to keep the participant and myself safe, and I decided to train as an art therapist. My interest in the crossover between art therapy and art education continued to grow. I went on to study for a master's degree at the Tavistock Clinic [an NHS mental health trust].

I continued teaching in art schools and built up a private art therapy practice, working mainly with artists and art students and training art therapists. My creative process workshops evolved out of my training and experience in three disciplines: teaching and learning, art practice and art therapy. I've been running these workshops since 1990, first in London and for the last 15 years here in Bridport.

I became passionate about improving the quality and safety of teaching and learning in art and design subjects in HE, for both the students and the practitioner tutors. Together with two colleagues I was working with at the University of East London, I developed a unique new course, the Post Graduate Certificate in Teaching and Learning Architecture. This incorporated my workshops in creative process and self-expression, and was influenced by the excellent education I received at the Tavistock.

I think being challenged by dyslexia as I am also motivated me to find ways to improve the teaching and learning experience.

TB: What do your workshops offer participants?

MC: To quote David Hockney, "I think you can't have art without play... that allows for surprises, the unexpected, discoveries..."

People tend to forget that play is serious." My workshops offer serious play! I aim to facilitate rather than teach. I set a brief. Participants mainly work with visual arts materials, but they are free to develop their ideas in different directions – performance or text, for example. Some briefs are for individual work and some for group work. The 'hands on' working with materials is interspersed with discussion, which provides reflective practice and shared learning. I hold and protect the space to create a safe 'playground'.

The course runs for five consecutive days, Monday to Friday, from 9.30am to 4pm in the Yellow Room at the Chapel in the Garden.

TB: What materials do you use in your workshops?

MC: A wide variety of materials: paint, clay, charcoal, pastels, inks etc., and stuff from the kitchen and the recycle bin. I supply all the materials, which offers variety and helps participants explore materials more freely than if they bring their own.

TB: What sort of people take part? →

Exploring creativity through serious play continued

MC: I enjoy and encourage diversity. There is so much to learn from each other. One year we had a 19-year-old and a 90-year-old in the same cohort and it was great. There are beginners, while others are trained in the arts and are looking to recharge. Some participants have taken technique-based courses before, but are looking to explore their individual creativity further. Each group is different.

There are 10 to 12 places on each course, and I find it's best to have at least 7 people. The group dynamic is very important to the way I work.

TB: And what do you get out of working with people in this way?

MC: I don't think it's tenuous to link my work with creativity to my commitment to social justice, for the individual as well as the wider community. Earlier in my life I was an independent witness for peace in Palestine and Israel and then in Northern Ireland during the Troubles. These experiences changed me, but I don't know how much of a difference I managed to make. I'm delighted that my courses make a difference, whether that difference is a ripple or a wave.

Perhaps also, being challenged by dyslexia and struggling in conventional education, it feels good to provide an alternative environment for learning.

TB: What are your future plans? Will you be making your own art?

MC: I'm wondering about that myself! My life is less about making art, and more about living creatively, wherever that may take me. I'm still engaged in making work. My son is settled at university and there are new possibilities for me. Let's see what happens next!

Mary's next creative process and self-expression course runs 11-15 March, 9.30am-4pm at The Chapel in the Garden. The price is £295 + £50 for materials and refreshments (bursaries available). Contact 07557 275275 / mfcaddick22@gmail.com.

The Importance of Being Earnest

by Oscar Wilde, performed by the
Bridport Stage Company
The Ballroom at the Bull Hotel
Thursday 4, Friday 5 and
Saturday 6 April at 7.30pm
Tickets £12 from Bridport TIC:
01308 424901
All profits to Samaritans

Two community plays to entertain and inspire



A Common Woman Reimagined

A community play about Greenham Common, based on a play by Mary Rensten with new scenes.
Directed by Margie Barbour
Lyric Theatre, Barrack Street
Saturday 6 April at 7.30pm
Sunday 7 April at 2.30 & 7.30pm
Tickets £12 (£6 concs) from the TIC

Design | Print | Finishing

Serving Bridport & West Dorset for over 65 years.

For creative design and print ideas for your next project, however big or small - contact us today.



01308 423411

office@creedsuk.com

www.creedsuk.com

Mountfield, Bridport, DT6 3JP

Do you know someone who struggles to read?

Read Easy provides free, confidential reading coaching for adults. It's friendly, flexible and fun!

To find out more, contact Read Easy Bridport: 07707 259905 readeasy.org.uk





Holistic Massage & Lymphatic Therapies

Shelli Lopes-Barnes

– Bridport Complementary Health –

54 SOUTH ST, ROOM 2, BRIDPORT DORSET

– 07543 039 223 –

ShelliHolisticMassage.co.uk



Bridge House Flowers

Experienced qualified florist

Seasonal flowers for all occasions

Local delivery in & around Bridport

jane@bridgehouseflowers.co.uk

07568 461024 • www.bridgehouseflowers.co.uk



BRITISH FLORIST ASSOCIATION

RN Stephenson

Electrical Contractors Ltd.



DOMESTIC, COMMERCIAL, INDUSTRIAL & MARINE

Alarms, CCTV, PATs, rewires, etc (no callout fee)

01308 422331 / 07590 995353

Email: info@rnstephenson.co.uk

Web: www.rnstephenson.co.uk



SAM BROUGHTON

BUILDING SERVICES

07789 748 649

BUILD
DECORATE

RENOVATE
LANDSCAPE

broughton.sam@gmail.com



equintervention.co.uk

What if a horse could change your mind?

Equine facilitated learning programmes

Practitioner introduction courses

equintervention@hotmail.com

01308 420050

SMITH & SMITH (Bridport) Ltd

8 West Street, Bridport DT6 3QP
(01308) 422172

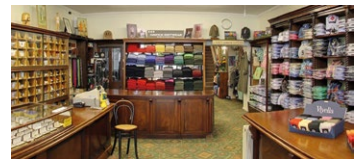
smithandsmithbridport@gmail.com

www.smithandsmithonline.co.uk



ORIENTIQUE[®]
Naturally
AUSTRALIAN

Adini[™]



Please call or email for lighting advice, to place an order or request a free brochure

Bridport Lighting



LARGE RANGE OF MODERN & TRADITIONAL STYLES

INTERIOR & EXTERIOR LIGHTING

52 South Street, Bridport DT6 3NN
01308 422318 info@bridportlighting.co.uk
www.bridportlighting.co.uk

Open 9.30am to 5pm Monday to Friday
9.30am to 4pm Saturday
Closed Sunday and bank holidays

Upholstery by Gillian

freshen up your favourite furniture

m: 07817 239 783 t: 01308 456002
upholsterybygillian@gmail.com

ST MARY'S Bridport

Parish editor – Peter Wright 456967

Director of music – Tim Linsley

07830 308701

Tower captain – Bob Hardwick 420632

Lies, damned lies, and statistics

This famous quotation from the Victorian politician Benjamin Disraeli has given statistics a bad press. The manipulation of statistics in advertising and in politics is well known, and footballer Jamie Carragher said: “You can shape statistics to make them look however you want them to.” So why does the Church of England persist in asking churches to collect statistics about their mission every year, and how can they ensure each church is collecting statistics in the same way?

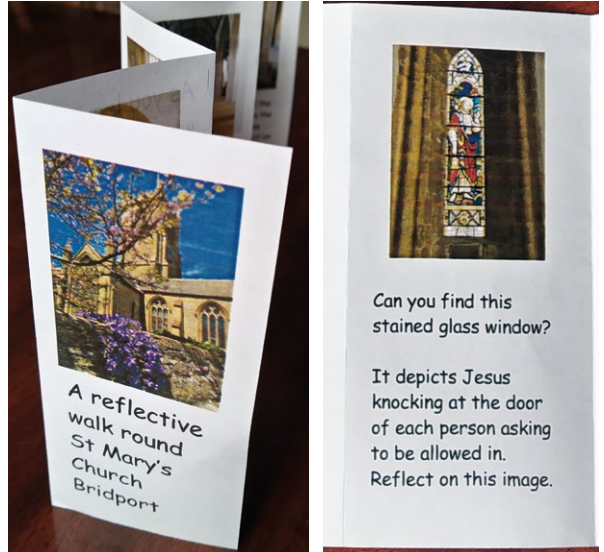
At St Mary's we have found some interesting facts when we compare 2018's figures with those for 2023, and these results probably reflect national trends:

- Average attendance on a regular Sunday has halved.
- Attendance on Christmas Eve and Christmas Day has remained the same.
- Attendance at special services during Advent has increased.
- Attendance on Easter Day and Easter Eve has halved.

The significant change for me, and one that I was not aware of, is the number of people who see themselves as members of the church but for a variety of reasons no longer worship there. In 2023 at St Mary's, while the average Sunday attendance was only 41, the whole worshipping community, which includes those not attending on a Sunday, was 77 – an increase from 2018. This includes those who for whatever reason cannot get to church for a service at 11am on a Sunday.

One way we are trying to meet the needs of this growing number of people who no longer come to church on Sunday is by arranging lifts for them to attend the monthly midweek communion service.

There is, however, another group of people who do not appear on the statistics at all. That is those who during the week come into church, not to attend a service, but because the building is open and they know they can find a place of peace. They come for many reasons: some are interested in the church's 800-year history; some come just to find peace amid the business of life; some come to remember loved ones, light a candle and find solace in their grief; some come to pray or leave a prayer request on the prayer board; and



A new 'reflective walk' leaflet is now available for visitors to St Mary's

some come just because it's raining outside! Some may write in the visitors book, or talk to a member of the church who happens to be there. One man who recently met a member of our church said it had been the best half hour of his week. So many different needs, so many different reasons for entering St Mary's.

As a means of helping people, we have devised a short reflective walk around the church. It is a mixture of treasure hunt, facts and challenge. Our hope and prayer is that it will enable people to reflect and engage not just with the history but also with their own spiritual journey through life. The leaflet ends with this Irish blessing:

*May the road rise up to meet you,
May the wind be always at your back.
May the sun shine warm upon your face; the rains fall soft upon your fields and until we meet again, may God hold you in the palm of His hand.*

We pray that all who enter the doors of the church may find there a place of peace, prayer and worship – whether or not they appear in the statistics!

Peter Wright

Covid-19 made an impact in many ways, and many of our regular donors haven't been able to support the church as they once did. If you can make a donation, whatever you can give, you'll be helping to maintain our beautiful church and its ministry in the heart of Bridport.



HOLY TRINITY Bothenhampton

Parish editor – Barbara Ffooks 423122
Children & youth worker –
Jean Mitchell 422127
Director of music – vacancy

From the parish editor

March is the first month of spring, when birds are making their nests and gardens are full of bright colours after the rather drab winter scene, cheering us all. Also, on 31 March, Easter Day, the clocks go forward one hour to start British Summer Time, giving us lighter evenings.

The next coffee morning at Holy Trinity is on Saturday 2 March from 10am to 12 noon, with cakes, books and a raffle.

Looking ahead, the coffee morning on Saturday 4 May will be extended into a hobbies day. Lots of people make things, or paint, or stitch, for example, and may appreciate an opportunity to show their work, chat to visitors and sell items if they wish. Refreshments will be available during the day. If you would like to share your hobby with others and book a display space, please contact Heather Purse on 423220.

The Luncheon Club will meet again on Thursday 14 March for a two-course hot meal in the village hall. This is a very pleasant way of meeting friends and is open to all. For catering purposes, please let Heather know if you would like to go.

Lent study groups are underway, using the book *Tarry Awhile* by Selina Stone. Details of when and where the groups are being held are on page 6. Details of Easter services across the parish are in the table on page 7.

Music has always been an important part of services

Chamber choir Cantamus will be performing at Holy Trinity on Saturday 9 March



David Parnell

Luncheon Club

at Bothenhampton Village Hall

Thursday 14 March

From 12 noon; lunch served at 12.30pm

*Come and enjoy a two-course
hot lunch with others*

- Chicken casserole or
leek and mushroom risotto
- Bread & butter pudding

Price £5.50 per head
Please book so we
have numbers for catering:

Heather Purse 423220

heatherpurse@yahoo.co.uk



and activities at Holy Trinity, and on Saturday 9 March there will be a concert in the church by Cantamus. Formed in 2012 with members from West Dorset, Devon and Somerset, this chamber choir (pictured below) will be singing a programme of sacred and secular works, reflecting on this period in the church calendar and also on the lighter time of spring. The concert starts at 7pm and tickets are £12 (cash or card). Refreshments will be served.

The village hall committee will be hosting a cheese and wine evening on Saturday 16 March in the hall from 7.15pm. The cost is £10, to include a glass of wine or soft drink, in aid of the Save the Children Fund Gaza Emergency Appeal.

There will be another tidy-up session in the Old Churchyard on Saturday 13 April from 2pm.
Barbara Ffooks

FILM NIGHT

in Bothenhampton Village Hall

Saturday 23 March showing *The Old Oak*

Doors open 7pm, film starts at 7.30pm

Admission £5

Refreshments available

Please book by emailing lcnc2413@outlook.com



HOLY TRINITY Bradpole

Parish editor – Douglas Baldwin 424232
douglas.baldwin@seaside20.plus.com
 Tower captain – Janet Robinson
 07913 549946 / *jrb-jrb@outlook.com*
 For pastoral or personal issues, please
 contact the Revd Janis Moore 425644
 (Wednesday is her day off)

Coral Hatton

Everyone at Holy Trinity was shocked and saddened to hear news of the sudden death of Coral Hatton on 29 January.

Coral was deeply committed to our community. She had served as a licensed lay minister in the Parish of Bridport – most especially at Holy Trinity – since 2006 and her other roles included being a vital member of our church’s music group. She was also a passionate supporter of the Welsh national rugby team and quite often wore her rugby jersey at services during the Six Nations tournament and the World Cup.

We will all miss Coral’s compassionate, supportive presence enormously. There is a fuller tribute to her on page 3.



Church lighting project

The long-awaited updating and improvements to the lighting system, which have been in the planning stage for more than three years, are now coming to fruition and we expect work to start on 2 April. Holy Trinity is a Grade II* listed building, and it is vital that anyone working on it exercises extra care, so the Church of England is very cautious about giving approval to such work. There may be a little disruption to midweek activities, but Sunday services will continue as normal.

Bradpole Brunch

Everyone is invited to the village hall at 11.30am on Sunday 17 March.

Tots@Ten

Pre-school children are welcome to join others, with parents and carers, every Wednesday during term time in the church where there is lots of space and toys to play with. Refreshments will be served.

The Friends of Holy Trinity



SPRING QUIZ in the church

Friday 15 March at 7 pm

Tickets £12 to include a fish & chip supper
 Drinks by donation

Bring a team of four or join a team on the night. Numbers will be limited so please book in advance by phoning 420716

The Friends of Holy Trinity

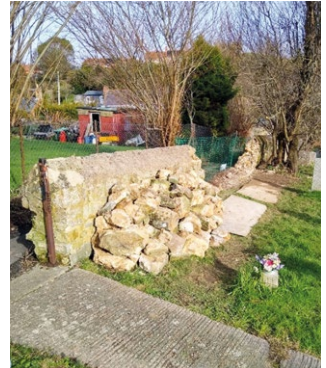
The Friends invite you to a spring quiz in the church on Friday 15 March at 7pm. See the panel above for details.

Village lunch club

Do come to The King’s Head for a social and reasonably priced lunch on Tuesdays 12 and 26 March. Please let Daphne King (427552) know if you will be coming so she has the numbers for catering.

Churchyard wall

Repair and maintenance work started in January to the wall adjoining the public footpath. Local contractor H Leaf & Sons met a snag immediately: part of the wall had bowed, shifted and become unstable. It had to be completely dismantled (*pictured*) and will be rebuilt. The work will continue subject to the weather.



Deliveries of The Bridge

Most areas of Bradpole are covered by a regular band of volunteers from the church and the village, but some are not. The copies all get delivered, but some 350 in different areas are left to Janet Robinson and her husband, Paul. If you have some spare time in 10 months of the year and you could deliver to a small area, please contact Janet, whose details are at the beginning of this column. You don’t have to be a member of Holy Trinity to deliver copies, and your help would be very much appreciated.

HOLY TRINITY Bradpole continued...

Behind the scenes in the bell tower

Like all mechanical systems, the bells and the equipment supporting them need a regular inspection and service to ensure they are safe and in good working order. This was carried out in January and the inspector's report afterwards was:

- A new set of ropes was fitted.
- New stay bolts were fitted to the 3rd bell (the bolts were too long and could not be tightened).
- The 3rd slider was running on the bottom of the frame. The runner board was adjusted & raised up $\frac{3}{4}$ ".
- Several pulley sheaves have slight grooves in them; 2nd and 4th are the worst. At present they are still serviceable.
- There is grease leaking from the back end of the wheel-side gudgeon on the tenor bell. This is only minor and should be monitored during the next year.
- All ringing fittings are in good order.

This means the bells will continue to summon and welcome parishioners to the church each Sunday, and the simulator training facilities for ringers from Bradpole and other towers will continue safely.

Bradpole Parish Council

The council met on 11 January and the minutes are online here: www.tinyurl.com/39yxpnzx (links to the council's website). Among the items discussed were: Railway Crossing interpretation board; Pymore Rd – road markings and road signs near St Catherine's School; Dorset Council-owned land – Nature Reserve, Court Close; and flooding issues in the parish.

Cllr Baker gave a brief update on the Bridport Town Council Community Governance Review (CGR)



transition meeting in December. He said the Bradpole Parish Council committee structure proposal had been submitted to Bridport Town Council and the parish council would continue to be represented on forthcoming CGR meetings.

The parish council's next meeting, on Thursday 14 March, will be its very last. We hope Bradpole will be duly represented on the new Bridport Council so villagers will continue to have a voice about affairs close to home.

The election of councillors for the Bradpole ward of the new Bridport Council will follow this timetable:

- Nomination forms and information have been available online from mid-February.
- Notice of election will be published on Mon 11 March.
- Nominations can be received from Tuesday 12 March. They must be delivered by hand, either individually or in bulk, by appointment in one of five locations (Dorchester, Weymouth, Wimborne, Blandford and Wareham). Times and dates to be advised.
- The deadline for receipt of nominations by the returning officer is Friday 5 April at 4pm. This is also the deadline for withdrawing nominations.

If you have any issues you would like to raise with the parish council, please email the parish clerk: bradpole@dorset-aptc.gov.uk.

Bradpole Buzz Group

The group would love some support with the following:

- Practical help with planting
 - Offers of wild plants and seeds from your garden
 - Suggestions and general support
- Please phone Rose Van den Akker on 01308 425756 or email bradpolebuzz@gmail.com.



ST MARY'S Walditch

Parish editor – James Craddock 458725
walditchbridgejsc@outlook.com

Vergers – Pat Stapleton 456421

If you have any pastoral or personal issues, please contact the Revd Ann Ayling 424896 (Wednesday is her day off)

Walditch churchyard conservation – an update

The churchyard conservation project started in 2019, when we set out our initial aims:

1. Enhance and increase the range of appropriate native wildflowers.
2. Increase the amount and diversity of insects.
3. Attract birds, small mammals and reptiles into the churchyard.

Nothing in nature is set in stone and we have to learn to adapt to what does and does not work. Whatever happens, it will continue to evolve with no end point. Sunshine, rainfall, summer and winter temperatures, and the soil all influence what thrives – or not. It isn't unusual for a wildflower to be present one year, not turn up the next, and reappear the following year or sometime later. →

ST MARY’S Walditch continued...

Overall there has been success in maintaining the existing wildflowers and introducing 13 new species, although the hot dry summer of 2022 didn’t make it easy to get new plants established. However, only lady’s smock completely failed to survive, and it may still reappear. These introductions have a local provenance or a Wildlife Trust-approved seed source.

Over three consecutive years we have unsuccessfully sown yellow rattle, a weak parasite of grasses, into an area of very vigorous grass and have given up, at least for now. It thrives self-sown in another part of our area.

In 2022 insect activity seemed quite encouraging, but 2023 was disappointing by comparison. This may in part be because the area is isolated, although this is less so now that the whole 1901 churchyard extension has been brought into conservation. There are plenty of signs of small mammal activity along the wall.

As in the two previous Junes, we took part in a national project called Churches Count on Nature. Recording covered the entire churchyard and we identified 84 species including grasses, ferns and sedges. Numbers ranged from a large quantity to just a few or a single plant. Indicator species denoted that the soil is neutral.

If you would like to get involved with this interesting and worthwhile project, please contact Jane Mowatt: janeemowatt@gmail.com.
Robin Stapleton

It’s all about the flowers

Grateful thanks to Jane Trower from Bridge House Flowers, a local florist, for visiting us at St Mary’s Walditch to demonstrate sustainable floristry using spring flowers. Thanks, too, to all those from the



The churchyard conservation project has helped a number of species to flourish, including these plants

Walditch flower arrangers group who took part. Personally I very much enjoyed the affirmation and practical lessons of the event. Thinking this style through, I see that experimenting using sustainable floristry techniques is both possible and enjoyable.

Jane set up jam jars in a window alcove (*pictured*) and started the greenery introduction with a fern pot on top of a base, creating possibilities for re-planting once the display is dismantled. Naturally home-dried flowers helped to fill any gaps between current garden foliage. Choosing flowers that are seasonal and local through flower farms, allotments, gardens and your churchyard is a good way forward.

We also had a practical introduction to a range of flower displays using a recyclable plastic pot. Some of us started our display by making a reusable flower holder from scrunched-up chicken wire secured at the sides, while others placed broken twigs inside the base, with larger twigs across the top and string threaded underneath to secure the twig ends. Both methods give scope for various displays such as a small oval, fan shaped or triangular flower arrangement. Don’t forget to monitor the water required.

I was thrilled to see a replica Constance Spry flower pot shaped like a top hat and her use of curly cabbage leaves fanned out inside a large cupped vase.

There’s more information about creating sustainable flower arrangements in churches online here: www.tinyurl.com/mubr4ekw (links to case studies on the A Rocha website).

Michele Craddock

Jane Trower visited St Mary’s to demonstrate sustainable floristry techniques, including this display



ST MARY’S Walditch continued...

Walditch Garden Group

Join us for our garden group meeting on Thursday 28 March at 10am in the village hall. We look forward to welcoming everyone interested in coming along. We meet on the last Thursday each month for seasonal topics and garden discussion with tea/coffee and biscuits. For more information phone 07810 110461. *Jane Mowatt*

Garden tips for March:

Prune bush and shrub roses. Prune shrubs with colourful winter stems. Mulch bare soil in borders. Protect fruit blossom against frosts. Sow sweet peas and place in cold frame. Sow hardy annuals where they are to flower. Plant early potatoes and asparagus. Sow vegetables outside. Harden off young vegetable plants before putting outside. Divide herbaceous perennials.

Ten flowering plants for spring:

March/April: *Clematis alpina* (below left), *Anemone blanda* and *Primula vulgaris*

April/May: *Alyssum saxatile* and aubretia

May/June: *Fritillaria meleagris* (below right)



ST JOHN’S West Bay

Parish editor – Sue Pollock
07903 558568
Chapel warden –
Rosemary Russell 423013

News from St John’s

As we don’t yet have a date for returning to St John’s for services once the electrical problems are sorted, please check the noticeboard outside the church for information. Most services are being held in Harbour House or the Salt House.

West Bay WI

The WI will meet for their regular Knit & Natter on Wednesday 6 March from 10am to midday. Then on

Thelma’s hymn notes

Love’s Redeeming Work is Done

This Easter hymn isn’t as well known as others, but is popular at funerals. It was written in the 18th century by Charles Wesley, who worked with his brother John to found Methodism. The hymn was published in 1739 and appeared in John Wesley’s Foundry Collection of 1742. The tune is Savannah.

Many consider that this hymn beautifully encapsulates the message of Easter; at this time we see proof of God’s love for us and we behold signs of our redemption. The paradise that Christ has created and opened for us is not just the possibility of getting into heaven but begins right now, in this life. We share in the eternal life of Jesus Christ, and we don’t have to wait.

The last verse is a piece of mini-theology, a style the Wesley brothers favoured for congregations drawn from the mainly illiterate working classes, as it was easy to remember:

“Hail the Lord of earth and heaven! Praise to thee by both be given: Thee we greet triumphant now; Hail, the Resurrection thou!”

Thelma Pulman

Organist at St Mary’s Walditch



the following Wednesday, 13 March, the speaker at their monthly meeting (2.30 to 4.30pm) will be Linda Gundry, sharing the delights of country dancing.

The WI is always keen to see new members. If you are interested in joining the group, please contact Alison Ridge on 01308 897293 or Maggie Hooper on 07720 056310.

Round and about the Bay

Have you noticed the two new substantial picnic benches (*pictured overleaf*) at the end of the East Pier? One is in memory of Eddy Hider, and states that he was ‘One of the Magnificent Seven & Dorset Knobs’, which I found intriguing. The other is in memory of a couple, Jack and Betty Pafford, who lived in Bridport.

As I walked along the pier, I counted the benches. There are 18, but only one faces the East Beach and all the others face west. You can see the latest cliff fall clearly from the pier, and even though a lot of the fallen debris will soon disappear with the force of the →

ST JOHN'S West Bay continued...

waves, people need to be careful when walking along the beach to stay as far away from the cliffs as possible, as no doubt there will be more cliff falls to come.

Although I often pass Sladers Yard, my first visit there was on Saturday 27 January for the opening of the Dreamscape exhibition, which runs through to 16 March. The exhibition is by five astonishing artists of the imaginary world: painters, wood carvers and a furniture maker. I also learnt about the strange shape known as *The Wave* (pictured right) that covers a seating area and was designed and created by Petter Southall. The piece was shown at the RHS Chelsea Flower Show 2019 for Tom Hoblyn's Dubai Majlis Garden. 'Majlis' is the Arabic word for a sitting place where community members gather to discuss local events and issues and to resolve problems. While living in Dubai in the 70s, I used to pass the majlis every day when taking our sons to school. Happy days!

The Discovery Centre resumes weekday opening from 19 March, Tuesday to Sunday, and the WW2 exhibition will continue until June. There is a talk at 2.30pm on Wednesday 27 March in the Salt House about the secret wartime resistance movement set up to counter a possible invasion. Tickets are £5 from Bridport Tourist Information.

As a Discovery Centre volunteer you learn so much about West Bay, and of course you meet some very interesting people, so do pop in to find out more.

The harbour wall, currently fenced off, will require major repair work, possibly taking until 2025 to complete. During this time the car park by the harbour master's office and some of the West Pier will be closed



East Pier has two new memorial benches (top); this seating area at Sladers Yard is covered by a wooden shape called *The Wave*, designed and made by Petter Southall

for equipment storage. Whether or not the kiosks will be able to remain open is uncertain. The toilets will also stay closed, but new, more substantial temporary toilets are being planned for Fisherman's Green.

Sue Pollock

ST SWITHUN'S Allington

Parish editor – James Craddock
allingtonbridgeswc@outlook.com

Distribution – Kevin Payne 07976 534517
payne.kevin6@gmail.com

Verger – Graham Williams 07969 826430
graham_williams11@sky.com

A parish service for Candlemas

The monthly parish service was a Candlemas Eucharist at St Swithun's on Sunday 4 February.

The celebrant was Canon Deb Smith, who was warmly welcomed back after a month's sabbatical. Deb first

mentioned the sad passing of Coral Hatton, who had had a 17-year ministry in the Parish of Bridport as a licensed lay minister, as well as seeking out those on the fringes of society for spiritual care.

The Revd Dan Shackell gave the sermon, including a moving story from his time as a director at the Spires Centre for the homeless in Streatham, London. One Christmas Eve some decades ago, a homeless man held a newly born baby whose mother was a volunteer there. The man said to those around him that being entrusted to hold the baby was his Christmas present.

The hymns mainly followed the Candlemas theme and included *When Candles Are Lighted on Candlemas Day*; *Like a Candle Flame Flickering Small in Our Darkness*; and *Lead Us, Heavenly Father, Lead Us*.

The prayers of intercession were for justice, the suffering, the rejected outcasts, the departed and for



ST SWITHUN'S Allington continued...

grace to put our trust in God's promises as Simeon and Anna did.

The congregation recited the Creation Care Creed, with themes of caring for God's world, God's general abundance, the spoiling of the earth by its inhabitants, a desire for a resetting, Christ's choice to share our joy and suffering on earth, and what the natural world can teach us of God's nature. Within Christ's sacrifice lies seeds of hope and freedom and the work of sustaining and renewing the earth in obedience to God.

We were asked to remember St Brigid, the second most celebrated saint in Ireland, who founded monasteries and convents for those seeking a holy life.

The St Mary's Sunday School children had created some crafts on the theme of Christ being the light of the world. Finally, some delicious cakes were served with coffee and tea in the church hall.

James Craddock

The West Dorset Singers gave a successful concert at St Swithun's at the end of January, conducted by their musical director, Matt Kingston

Canon Deb Smith and the Revd Dan Shackell led the Candlemas parish service at St Swithun's last month

An evening of inspiring music

On 27 January a packed St Swithun's enjoyed a concert from the West Dorset Singers, with music inspired by traditional texts about the life of Mary, mother of Jesus.

The first work was a Magnificat by John Rutter, one of Britain's most celebrated contemporary composers, with seven movements in a mix of popular styles. Musical Director Matt Kingston balanced the choir with the professional instrumentalists and together they skilfully navigated the tricky rhythms and dynamic range.

Holly Morgan delighted us in the soprano solo passages, and the church's Conacher organ, played by Oriel Chapman, nicely filled in the overall sound without ever dominating.

The second half comprised two versions of the Stabat Mater, the first by Matthew Coleridge, the name under which Matt Kingston writes. This fairly short work was gentle and contemplative and the choir's *pianissimo*, *a capella* closing section particularly effective. Paul Carr's more extensive, Baroque-influenced setting followed, a melodic and richly harmonised work that the choir clearly enjoyed. With Mr Carr present, there was warm applause for performers and both composers.



Bridport UNITED CHURCH

Minister – The Revd Jane Wilson
01308 341159

Church secretary – Sue Herman
422598 / bridportsec@gmail.com

incorporating UPLODERS CHAPEL

Correspondent – Carol Hall
423163 / carol@gribb.plus.com

Finding solace in our troubled times

In early February we had Candlemas, marking the end of the Christmas season, and less than two weeks later Lent began, not forgetting the Tuesday before, when we tossed our pancakes. And now, Easter is on the horizon. It feels like we've had very little time this year to adjust to the dramatic change between the Christmas season and Lent in the content of services and our thoughts.

But if we can be easily confused, it's nothing compared to the confusion in the natural world amid the effects of climate change. I had a carnation out in December and it's still flowering, while 'joy of the



Bridport UNITED CHURCH continued...

ground’ – the old West Country name for periwinkle – has been flowering continually and wallflowers and anemones are brightening the garden alongside the expected snowdrops, crocuses and primroses. I hope by the time the first eggs hatch from the early nesting birds there will be suitable food for chicks and parents.

Meanwhile, the manmade world also seems to be going through a period of turmoil and confusion, Ukrainians here bravely trying to start a different life while the war in their country grinds on, causing untold pain and destruction. The Holy Land is once again engulfed by war and hatred, and so many other parts of the world are suffering from war, oppression, terrorism and hate as well as famine caused by drought or floods. Even on the peaceful streets of our own country, anti-semitism and violence appear with horrible regularity. And many people are still struggling to eat, heat their homes, clothe themselves and their families and even keep a roof over their heads.

It’s difficult to look forward with any optimism with all that is happening in the world and the fact that we feel helpless to do anything about it. There is no easy answer – but I know that when I am feeling low and that I can’t do enough, or indeed anything, to help those who need it, a spell outside in the natural world is the only remedy I have. In unspoilt wild places and nature-friendly gardens, I feel I can catch a glimpse of the world that God created, unspoilt by mankind, and have a sense, perhaps, of the way He intended the world to be. A world that isn’t dependent on mankind. That is balm to my soul.

And perhaps – although we can do so little about the horrific things happening in the wider world – we should all at least try to reflect, in our gardens or in the

natural world around us, that we can see a microcosm of the garden God created. Maybe that way we can spread the wellbeing we discover there to others.

I pray that we all have a happy and peaceful Easter and that the conflicts we watch in horror can be brought to an end so those countries, too, can experience harmony.

Sue Herman

March services at Bridport United Church:

Sunday 3	10.30am	Jane Wilson
	4pm	Soul Space
Sunday 10	10.30am	Jane Wilson
Sunday 17	10.30am	Tony Wells
Sunday 24	10.30am	Gwyneth Owen
	4pm	Healing service with Jane Wilson
Thursday 28	7pm	Maundy Thursday HC and footwashing
Friday 29	2pm	Good Friday Walk of Witness (Churches Together) plus Service of the Sense
Sunday 31	10.30am	Easter Day HC with Jane Wilson

During Holy Week (25 to 29 March) there will also be daily prayers in the church from Monday to Friday at 8am and 12 noon.

Regular events at BUC

Coffee morning every Wednesday and Saturday (except 9 March) 10am–noon. Lunch Club fourth Wednesday.

Mondays	9.30am	Toddlers group (see left)
	10am–noon	Art group (inner hall)
	2pm	Art history
	2pm	U3A Tech Group (fourth)
Tuesdays	2.30pm	National Trust (last only)
	7.30pm	Bridport Choral Society
	2pm	Bridport Blind Club (first & third)
	2pm	Bridport U3A (fourth)
	4.30pm	Rainbows
	5.30pm	Brownies
Wednesdays	7.30pm	West Dorset Singers
	7.30pm	Bridport Big Band (church)
	12.30pm	Lunch Club (fourth only)
	1.30pm	All welcome. Two-course home-cooked meal.
	5.30pm	Please book: 422598
	6pm	Archaeology (inner hall)
	7.30pm	Kickboxing (inner hall)
		Fitsteps
		Kickboxing (main hall)

Little Lambs



At Bridport
United Church

0 – 4 yrs

+ parents and carers

Mondays

in term time

9.30 – 11

in the main hall

NO CHARGE

TOYS, CRAFT, SONGS, STORIES, DRINKS, SNACKS, FRIENDS

BEGINS 19 FEB

Bridport UNITED CHURCH continued...

Thursdays	2pm	Thursday Club (third) All welcome for tea, chat, games and crafts
	2.30pm	Bridport History Society (second only)
	3.30pm	Messy Church (fourth)
	6pm	Fusion Dance
Fridays	6pm	Kickboxing (main hall)

Special events

Sat 9 March	9–11.30am	Big Breakfast
Sat 23 March		Gardening Club spring show

From Uploders Chapel

On the first Sunday in February we enjoyed a lovely service taken by Peter Jenner. His service was very thought-provoking, encouraging us to take care of others however we can and reminding us that getting together in various ways can be a really good way of helping each other out.

Our monthly get-together for CAKE is also a way of supporting each other and is open to all. It will be on Tuesday 5 March at the chapel from 2.30 to 4pm. Why not come along, enjoy the company, laughs, chat – and of course cuppas and cake!

As I reported last month, our first service in January was taken by the Revd John Yarrien, who was also our solo clarinet player. Since then, our second service in January saw us welcoming a quartet – three guitar



A quartet of musicians accompanied the hymns at Uploders Chapel’s second service in January

players and one on the flute – to play the hymn music for us. The Revd Jane and Graham brought along friends and family to help at the service, which was lovely.

We are really pleased that the Pop Up Post Office is chugging along and we much appreciate the support we are getting from folk. You really know what community spirit is all about.

It’s now March and spring is now definitely beginning to show itself, with lovely snowdrops, primroses and other flowers in bloom. So I hope you had a Fantastic February and have the opportunity to make a Memorable March!

Carol Hall

March services at Uploders Chapel:

Sunday 3	10.30am	Tony Boyden
Sunday 17	10.30am	Jane Wilson

St MARY & St CATHERINE
Roman Catholic Church

Parish priest – Monsignor Keith Mitchell
keith.mitchell@pcedtr.org.uk
 Presbytery 424754
 Secretary – Faith Leborgne 422594
bridport@pcedtr.org.uk

Imagine...

In his classic song Imagine, John Lennon sings hauntingly of his ideal of a perfect world. He sings passionately about the ingredients of this world, this Utopia. It is the ideal of a perfect world in which there are no challenges and in which everything and everybody is wonderful. It is a world where, he says,

“there is nothing to live or die for” because everything is just perfect. Unfortunately, it does not reckon with Original Sin, the sin that makes each of us want to go our own way rather than God’s way.

If there were no ideals and no passion to strive for those ideals, despite the cost, then the world would spiral into anarchy and chaos. We have only to look around us and see that is true. Better to be a failure, under grace, in the real world because we have a passion for God’s way than to sit on our backsides or lie on our backs and imagine one where it is impossible to fail because there is nothing at which to succeed.

This month, Christians – the disciples of Jesus in the world today – will again be celebrating his Passion. He lived his whole life with one ideal, one passion, and that was to do the will of his Father. That was the motivation of his entire life. Even on the night he was betrayed and sentenced to death, he prayed to his Father: “Not my will but yours be done.” Despite his →

ROMAN CATHOLIC Church continued...

real fear and doubts in that garden of Gethsemane, his motivation and passion were undimmed.

What a passion to live and die for! It ended in apparent failure – death on a cross – but the ideal and the passion didn't die. The resurrection on Easter morning proclaims that this is the ideal that will never ever die. As the familiar hymn puts it: "The dance goes on." This is an ideal worth dying

and living for – the will of the Father.

To be a disciple is to share the passion, the ideal, of our Master. His dying and rising moves us beyond an imagined world into a real world where there are things worth living and dying for.

Monsignor Keith Mitchell



Sunday Mass is at 10am and is streamed online at www.bridportcatholics.org.uk and the Bridport Catholic Parish Facebook page. For updates about Sunday and weekday Mass, see our weekly newsletter on our website.

Easter Triduum

Maundy Thursday, 28 March

7pm Solemn Mass of the Lord's Supper, foot washing and Altar of Repose

Good Friday, 29 March

3pm Liturgy of the Lord's Passion

Holy Saturday, 30 March

7.30pm Easter Vigil and first Mass of Easter

Easter Sunday, 31 March

(clocks go forward one hour)

10am Easter Day Mass

**BEACON CHURCH
Priory Lane, Bridport**

Church office 456031
office@beaconchurchbridport.co.uk
www.beaconchurchbridport.co.uk

Welcome home: Beacon Church is a home for all

Hungering after the presence of God

At Beacon Church we hunger after the presence of God. We want to follow in his ways, not ours. We want to seek his presence in our gatherings and encourage everyone to have a personal relationship with our heavenly father. We will seek God's presence through worship, teaching, prayers and communion. We want prayer to undergird, surround and encompass all we do as we seek his presence among us. We gather to pray on Thursdays, at Lifegroups and before our Sunday service. *Psalm 128:1* Blessed is everyone who fears the LORD, who walks in his ways! *Acts 2:42* They devoted themselves to the apostles' teaching and to the fellowship, to the breaking of bread and to prayer.

Being loved and loving others: that God is love and that he loves us as we are.

We believe God has given us the gift of grace in saving us through his son Jesus, not because we deserve it but because he loves us. That he saved us while we were

sinners and that his death on the cross is complete. We love all those around us because of his love for us. We feel God calls us to develop our work with families, youth/ children and the Community Kitchen.

1 John 4:19 We love because he first loved us.

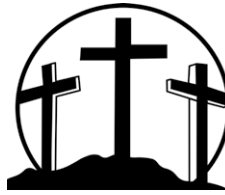


Being equipped for life

We are a church that believes in the Holy Spirit and the Word. We want to study God's Word and grow deeper in our knowledge and relationship with him. We have teaching on a Sunday and at life groups. We believe the leadership is to equip the saints – that is all believers – for all that God has called us to be. We want everyone to be able to stand on the firm foundation of Jesus and do the works he did and continues to do through us. *Ephesians 4: 11-13* It was he who gave some to be apostles, some to be prophets, some to be evangelists, and some to be pastors and teachers to prepare God's people for works of service, so that the body of Christ may be built up until we all reach unity in the faith and in the knowledge of the Son of God and become mature, attaining to the whole measure of the fullness of Christ.

CHRISTIAN FELLOWSHIP
King's Lane (in East St car park)

Office 424437 • David Collins 458227
info@bridportchristianfellowship.org
www.bridportchristianfellowship.org



**BRIDPORT
 CHRISTIAN
 FELLOWSHIP**

We are a member church of the UK Evangelical Alliance and an Ichthus Link Church. We meet for worship every Sunday at 10.30am and at various times during the week.

We seek to bless the community of Bridport with the Good News of Jesus, and everyone is assured of a warm welcome at our Sunday services or when joining in any of our activities.

Our usual pattern of activities is as follows (it varies during church festivals such as Christmas – see online for details: www.bridportchristianfellowship.org).

Mondays: Meals Outreach Project for those who find themselves in difficult times.

Tuesdays: Three House groups meet at 2–3pm, 2.30–4pm and 7.30–9.30pm.

Wednesdays: One House group meets at 7–9pm. Precious Ones, our group for young mums, meets in the church at 9.30–11.30am.

Fridays: One House group meets at 12.30–2pm. You can also come along and join in our Art Group, 10am–12 noon. You don't have to be brilliant at art!

Saturdays: Pray Chat coffee bar with free tea, coffee and cake, 10am–12.30pm.

Sundays: 10.30am–12 noon is our weekly service. On the first Sunday in the month, we also join together for a meal or BBQ after the service.

Please see our adverts on page 4 for details of two free events we have coming up this month at the Christian Fellowship.

Bridport QUAKER MEETING
The Meeting House
97 South Street

Correspondent – Jeni Edwards
 538105 / jeni.edwards69@gmail.com



A rose called Peace

From our correspondent

Quakers don't have 'creeds' but they do have 'testimonies'. These are qualities of the good life we aspire to live and we will go through them over the coming months. They are interconnected, but each can be encapsulated in one or two words.

The first testimony is 'Peace'. This is a word that's often used but rarely defined. Perhaps it is most readily understood as an absence of conflict, but isn't it much more than that? Somehow we all know about peace: it is the relaxation

inside when a squabble is over and someone says sorry; it is the hard-earned pact that ends a war; it is the joy of a walk in the outdoors where eternity meets time on a lovely sunny day. And it is the moment when you can take a deep breath and let it out slowly and restfully at the end – of the day, of the year, of a life.

Meeting is held at the Meeting House at 10.30am for an hour on Sunday mornings and 10.30am for half an hour on Wednesday mornings. All are welcome.

The Quaker website at www.bridportquakers.org contains all the details you need to book a room for an event or to find out more about us.

Jeni Edwards



Get involved: local clubs, groups & societies

Please contact the editor (details on page 2) if you'd like your group to appear here. Entries are free but are limited to a few lines and are for non-profit community groups and clubs and their events (not ticketed events such as concerts). Unless otherwise stated, all phone numbers are Bridport (01308).

West Dorset Flower Club meets at the WI Hall, North Street, at 2.30pm on the second Monday each month with demonstrations and speakers. On 11 March Elizabeth Whitcomb presents A Variation on a Theme and the competition is Tall & Elegant. Phone 456339.

Bridport & District Model Railway Club meets each Tuesday at Askerswell village hall 7–9pm. Members can run their stock on the club 'test track' or operate a club layout. Chairman Geoff Purse 423220.

Bridport Stage Company theatre group meets on Mondays 7–9pm at The Bull hotel, where they will perform The Importance of Being Earnest around Easter. All ages welcome; no experience needed.

Email Valerie: tasterella@hotmail.co.uk

Bridport & District Allotment Society (BADAS) is open to all. Membership is £5/year and gives discount at several gardening suppliers. Contact 250260 / email BADASHUB@outlook.com. More details online at www.bridportallotmentsociety.co.uk

Bridport Blind Club is a social club for the visually impaired. It meets twice a month for tea, entertainment & chat. Part of Dorset Blind Association, which provides personal and technical help. Ian Ibbotson 898484.

Bridport & District Gardening Club's AGM is on Thursday 21 March at 7.30pm at the WI Hall, North St. Afterwards there will be a chance to catch up over drinks & nibbles. Monthly meetings are open to non-members at £2. www.bridportgardeningclub.co.uk

Bridport Bridge Club meets Wednesday evenings & Friday afternoons for duplicate bridge at St Swithun's Hall, plus online on Thursday evenings. Friday sessions (not third Fri) are more relaxed. See www.bridgewebs.com/bridport or phone Martin Angold 861120.

West Dorset Music Community Orchestra

meets on Wednesdays in term time 6.30–7.45pm at the Christian Fellowship Hall in East Street car park. Contact 456297 / www.westdorsetmusic.org.uk

Friday Dance Group for women meets every Friday 11.30am–12.30pm at St Mary's Church House Hall, South St. Come and enjoy dancing as you like to a range of music. First session free. Details from Sue 425037.

Burton Bradstock Duplicate Bridge Group meets at the village hall on Tuesdays 1.45–4.45pm. Contact Kathy 485626.

Bridport Stroke Club meets weekly Sept–Christmas and Feb–July at the Community Room, Vernon's Court. Contact David Lawrence: dandhlawrence@gmail.com

Free play singing, improvisation and earth/peace movement chants. Spontaneous compositions of sound; few words. Tuesdays 2pm at Bridport Youth & Community Centre, Gundry Lane, for about an hour. All welcome, £1 per person. Phone Pen 07713 008290.

Bridport Folk Dance Club meets every Monday 7.15–9.30pm in the WI Hall, North Street. All welcome, including beginners. Phone 458165 or 459001.

West Dorset Singers (formerly the New Elizabethan Singers) meet for choral rehearsals in the United Church Hall on Tuesdays at 7.30pm from September to May. For more information contact the secretary, Sarah Stamford: sastamford@outlook.com / 425312.

Voices of Hope Singing Group is open to all ages and abilities. Easy, uplifting, joyful songs from around the world, some rounds and some in parts. Borough Gardens (off South Street) or The Chapel in the Garden if it's raining, Fridays at 11am. Suggested donation £5. janesilvercorren@gmail.com / 07887 675161 for more details or to join the mailing list.

Golden Cap Association (West Dorset), in support of the National Trust, organises illustrated talks on the last Monday of the month (except summer) in the United Church Hall, East Street, at 2.30pm. Contact Mike Nicks 459855.

Bridport Scottish Dancers meet on Wednesdays at 7.15pm (7.30pm start) in St Mary's Church House Hall, South St. All welcome, no partner required. First visit free, then £2 per session (incl. refreshments). Basic tuition given in the first hour. Please wear soft shoes if possible. Caroline 538141 / Malcolm 07790 323343 / www.bridportscottishdancers.org.uk

Bridport Choral Society rehearses on Monday evenings at 7.30pm at the United Church Hall. Contact Margaret Foster margefoster1956@gmail.com

Citizens Advice is here to help

Need advice on benefits, debt, employment or other issues? Pick up the phone and talk to us on Freephone 0800 144 8848. You can also email us via the contact form at www.bridportca.org.uk or drop in to 45 South Street, Bridport (Mon, Tues & Thurs 10am–3pm, Wed & Fri 10am–1pm).



Bridport Youth Dance offers classes in tap, contemporary, street, urban and musical theatre. To enrol or for more details contact Nikki Northover 07765 971357 / bridportyouthdance01@gmail.com / www.bridportyouthdance.org.uk.

Dementia Friendly Bridport has spaces in its gentle exercise group for people with dementia and their carers. It's run by a qualified instructor and volunteers. Tuesdays 1.45–3.15pm at Bridport Leisure Centre. Contact Debra: 07890 649561 / dementiafriendlybridport@gmail.com

Bridport Community Shed, between Mountfield and Bedford Place, opens Mon, Wed & Thurs 10am to noon. On the first Tuesday of the month there is also an evening stitching session (please book in advance). Contact 07593 880428.

Bridport Health Walks are free gentle walks around town. A 30-minute walk every Wednesday and a walk of about 60 minutes on the first and third Thursday each month. Meet in front of the United Church on East St at 9.45am and return for hot refreshments. No need to book, just turn up. For more details contact 01305 252222 / sarah.davies@dorsetcouncil.gov.uk

Bridport St Mary's Parkrun is a weekly, free, timed run or walk organised by volunteers. Saturdays 9am at St Mary's Field. Great fun for all ages and abilities. Register online first then bring your barcode on your phone or printed out. Find us on Facebook or visit www.parkrun.org.uk/stmarys

Bridport Tree Planting Group plants & gives away 1,000 trees a year in public and private spaces around Bridport. Three free saplings available per household. Help needed to water and weed young trees. Contact joe@thehacketts.uk for details and to receive newsletter. www.westdorsetfriendsoftheearth.org.uk/index.php/more-trees-please

Bridport History Society meets on the second Thursday of each month (except July and August) at the United Church Hall, 2.15 for 2.30pm. Visitors welcome £5pp. Membership is £10 individual / £15 couple. For more info visit www.bridporthistorysociety.org.uk

Harmony Drop-in provides a safe, social space and peer support to aid the recovery journey of adults in the Bridport area who are living with mental health difficulties. Our group (Mon, Wed & Fri 10am–1pm) offers activities and support, fostering wellbeing and increased self-esteem. Contact 07597 379290.

Bridport Community Front Room offers face-to-face support for people reaching a mental health crisis point or needing wellbeing support. Assembly Rooms, Gundry Lane. Thursday to Sunday, 3.15 to 10.45pm. Appointments 07385 290804.



ASCAPE offers social opportunities and support for autistic young people and those with social anxiety aged 4–25 and their families. Contact info@ascapigroup.org or visit www.ascapigroup.org

Bridport Inner Wheel meets monthly at Haddon House, West Bay, to enjoy friendship and listen to speakers as well as helping the community. Contact Sue Pollock 07903 558568 / rognsuewbay@btinternet.com

Colmer WI meets on the second Thursday each month at 7.30pm in the WI Hall, North Street. Visitors welcome to come for a no-obligation evening. Contact Sarah Fletcher sarah.fletcher33@hotmail.co.uk

Bridport & District u3a is for people no longer in full-time employment. Monthly meetings are at 2pm on the fourth Tuesday each month in the United Church Hall, East St. The talk lasts about an hour, followed by Q&A and refreshments. On 26 March Lieutenant Colonel James Porter (retired) presents The Invasion of Sicily 1943. Members free, visitors £3. More than 60 u3a groups meet regularly, covering a huge range of interests. Contact Alastair Forbes 424166 / chair@bridportu3a.org.uk / www.bridportu3a.org.uk

The **u3a Singers Group** meets on alternate Thursdays for a 10.30am start at the WI Hall in North Street.

Contact Heather 425219 / www.bridportu3a.org.uk

Bridport Community Fridge redistributes surplus food free or for a donation. Usually Tues and Sat 10–11.30am at The Chapel in the Garden, East St. Also at St Swithun's Church with **Bridport Food Surplus Stall** on Thursdays 9.30–11.30am. See their Facebook page or email events@bridportunitarians.co.uk

The Cowshed Wellbeing Gardens group meets on Tuesdays 2–4pm. Gardening, talking, art and workshops for people with health vulnerabilities or wishing to enhance wellbeing. Access is to the left of Bridport Medical Centre. For more information please text 07769 720773.

Bridport Community Carnival Committee enables both carnival processions to happen on the third weekend of August each year. Would you like to get involved with planning this sociable event for 2024? Contact joycedunford@yahoo.co.uk or visit www.bridportcarnival.co.uk

Bellringers in the Parish of Bridport: We always welcome new ringers and are happy to train you on our bells. At St Mary's Bridport we meet at 7.30pm on Thursdays. Contact Bob Hardwick 420632. At Holy Trinity Bradpole we practise at 7.30pm on Tuesdays. We have a ground-floor ringing chamber and training simulator. Contact Janet Robinson *jrb-jrb@outlook.com*
Bridport & District RNLI holds five or six events (including Seatown BBQ) each year to raise money. Volunteers always needed. Contact Sadie 07811 470127 or Annie 07790 713156.

The Rotary Club of Bridport meets on the first and third Tuesday of each month at 6pm at the Bull Hotel as well as for other fundraising and social activities. We help good causes locally, nationally and internationally and support the local community. Contact Mike Green 07909 990693 / *mikegreen@greenmail.net*

MMMM! Monday Movie, Meal & Mingling from United Diversity Bridport (UDB) & Sustainable Bridport. Mondays 6–10pm in the White Room, Chapel in the Garden, East St (entry via Rax Lane). Inspiring documentaries and short films by local filmmakers. Admission £3 to cover room hire (UDB members free). Food and drink available. *www.ud.coop/mmmm*

Bridport Branch Royal Naval Association meets on the third Thursday each month at 7 for 7.30pm in the Bridport & District Social Club, North St. Ex-matelots and all other ex-military always welcome. Refreshments available. Contact Bob Bickers *thebickerage@aol.com*

Somerset & Dorset Family History Society (West Dorset Group) meets at Lodgers Village Hall. Members £1, visitors £3. Email Jane: *jferentzi@aol.com*

Bridport Dog Training Society has been active for 60+ years and meets on Monday evenings at St Mary's Church House Hall, South St. Contact club secretary Sue Palfrey 07787 289425. A trained dog is a happy dog!

Stepping Out Bridport is an exercise and wellbeing programme, led by trained rehabilitation instructors, for people living with or beyond cancer. Monday and Thursday mornings at the Pavilion, Bridport Leisure Centre. All ages welcome. Contact *j.perfect@bridportleisure.com*. More information at *www.steppingoutbridport.co.uk*

Disabled Carers & Friends meet on Thursdays 9am–noon at Vernon's Court Community Room, South Street. Contact *pete.bowditch@hotmail.com* / 423620 / 421213 / 427819.

Bridport Royal British Legion meets on the third Saturday each month at 10am for a coffee morning. Come along to our hall in Victoria Grove for a chat and to find out about membership and activities. The newly refurbished hall now has disabled access and is available for hire. Contact Linda 425664 (hall bookings) or Mike Thompson 07974 534945 / *mickey_thompson56@hotmail.com* (membership.)

Life+line Bereavement Support is a Parish of Bridport initiative for people of all faiths or none, meeting in a supportive, confidential environment to listen to and encourage one another in our experience of grief. Fourth Monday of every month 2.30–4pm at Greenfields, Bridport Community Hospital. Contact Diana Wright 456967.

Salway Ash Acoustic Sessions are on the first Tuesday every month at 8pm at the Anchor Inn. Sing, play, join in, listen, enjoy. Contact Harry Britton 421225.

Bridport St John Ambulance unit meets at TS Keppel, West Allington, on Mondays. Cadets (aged 10–18) 6–7.30pm, adults 7.30–9pm. Volunteers are always welcome to join the unit. For details contact the unit manager: *caroline.rendell@sja.org.uk*

The **National Coastwatch Institution** works with other emergency services to keep people safe along our coastline. Volunteer watchkeepers are always needed for lookouts at Burton Bradstock and Charmouth. Contact Station Manager Judy Clarke: *judy.clarke@nci.org.uk*. Also see our feature on pages 8 and 9.

CARPET WORLD
Established 39 years
Carpet, vinyl, Oriental rugs & contract flooring
WE EMPLOY OUR OWN EXPERT FITTERS
Free fitting terms with free estimates and planning
Only at 52A West Street, Bridport (next to Waitrose)
01308 427081 • www.carpetworld-bridport.co.uk



Stephen Field
Painting and Home Renovation

Woodwork and carpentry
 Fixtures and fittings
 All household repairs considered

✉ stephenfield24@hotmail.co.uk
 ☎ Tel: 01308 456059
 ☎ Mob: 07952203093

BRIDPORT AUCTION (est. 25 years)

No. 1 St Michael's Trading Estate, Bridport

- Free valuation for auctions
- Probate & insurance valuations
- Property clearance services

Tel: 01308 459400

Email: info@bridportauCTIONhouse.com

HOME / GARDEN MAINTENANCE

Jon 07341 554340

Gardening – Fencing – Painting
Carpet cleaning service



Suppliers and installers of
Aerial – Satellite – CCTV

Wi-Fi points for domestic
and commercial situations

Email: sales@wessexairals.co.uk
Phone: (01305) 813010 – Weymouth
(01308) 900113 – Bridport
www.wessexairals.co.uk



Charlie Kennerley Chimney Sweep

Traditional and power sweeping

CCTV flue surveys | All work certificated | Fully insured

T: 07771 770769

E: info@charliekennerley.com

www.charliekennerley.com

Covering South Somerset, West Dorset and East Devon



Stanton Garage Doors Ltd

T: 01305 789883

www.stanton-garage-doors.co.uk

Showroom now
open



- Leadwork specialist
- Slating & tiling
- Zinc & copper
- Flat roofing
- Velux windows
- Fascia & soffits
- Guttering & downpipes
- Chimney rebuilds

Perennial Roofing Contractors Ltd
are a local roofing contractor, specialising in lead and hard
metal roofing and repairs



Call for a no obligation site visit and free quotation
T: 01308 424515 - E: info@perennialroofing.co.uk



HELP IN YOUR HOME

Home help available for immediate start,
with regular hours to suit, in Bridport and
the surrounding area. Friendly, honest, reliable
service with established local company.

Tel: 07929 091504 or 01308 423563



Open To All
Local Food & Drink
Dog-friendly
Costa Coffee
Sunday Carvery
Curry Night
Daily Happy Hours
Large Beer Garden
Children's Play Area
Indoor Soft Play
Fire Engine Display



Book Online:

martinsbarandrestaurant.co.uk

Eype, DT6 6AR

CRICKMAY STARK ARCHITECTS

T 01305 262636 | 01297 443191

E info@crickmaystark.co.uk

- New Build
- Residential
- Extensions
- Commercial
- Conversions
- Historic
- Conservation
- Community

From initial design to scheme completion, we are here to guide you through your construction project.

www.crickmaystark.co.uk



Established in 1850
with offices
in Dorset & Devon



Kennedys

ESTATE AGENTS

TRUSTED LOCAL PROPERTY
PROFESSIONALS



TEL: 01308 427329

www.kennedystateagents.co.uk

Tiling • Roofing • Bricklaying • Plumbing • Gardening • Joinery

Landscaping • Sheds • Cleaning • Fencing • Painting



Robert Marks

General maintenance and
small building works

07973 884232

CoastalCornerMaintenance@gmail.com

Patios • Garden rooms • Drainage • Plaster and rendering

Handyman • Decorating • Glazing • Guttering • Insulation

Dorset Water Centre

New Home? New Kitchen? New Bathroom?

Keep your home looking new for longer
with a **WATER SOFTENER**



*Fabulous local
company, highly
recommended by
our customers*

"Excellent service from initial contact to installation. Would highly recommend this company. Thank you"

Anne

"Always friendly and helpful taking the time to answer any questions. Outstanding customer support. Thank you"

Mark

"Very happy with the friendly and professional service provided by Dorset Water Centre and delighted with my new water softener"

Jennifer

Softeners | Salt | Service | Drinking Filter Systems | Conditioners | Quookers

01305 265548 | www.dorsetwatercentre.co.uk

Unit H4 Roman Hill Business Park, Broadmayne DT2 8LY

Vicary & Co

Chartered Surveyors & Property Agents

Sales & Lettings

Honest Market Appraisals by
expert registered Valuer

Bridport - 01308 459550
Axminster - 01297 33449
vicaryandco.com

BURROW

Wastewater Treatment Plant
Installations for
Owners of Septic Tanks

Unsure about the new laws
that affect you?

Call us for a no-nonsense chat so
we can assess if you need a system
upgrade, to stay legal and avoid
pollution.

burrow-environmental.com
01935 507 508

The "General Binding Rules" were introduced by the government because septic tank effluent is polluting rivers and streams both directly and via groundwater. The new laws make it compulsory for some homeowners to upgrade their systems to a treatment plant, so that almost all of the polluting substances are prevented from being released into the environment.



KITSON & TROTMAN

www.ktlaw.co.uk

LEGAL ADVICE AND SERVICES FOR LIFE



BRIDPORT 01308 427436 | BEAMINSTER 01308 862313
WEYMOUTH 01305 341400 | LYME REGIS 01297 442580



**We Care For You by
Caring About You**

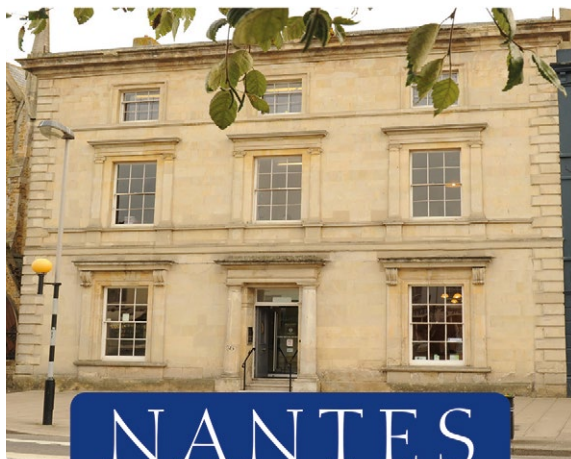
Daley Home Care, backed
by years of the very highest
quality experience, is **ready**
to look after you.

Whatever your needs, our superbly trained carers will ensure the *dignity and respect* you deserve as we assist you to remain independent in your own home. We provide the *very best service* every day of the year, at a time and frequency that suits you.

We offer a complete range of services from personal care to cleaning, cooking and shopping. Now providing full live-in care.

Contact: **Mark Roberts, Daley Home Care**
01308 898345 email: office@daleyhomecare.co.uk

LEGAL ADVICE IN PLAIN ENGLISH



NANTES
Solicitors & Notaries

**Bridport, Dorchester,
Portland & Weymouth**

01308 422313
www.nantes.co.uk

Trusted Local Independent Family Business
FUNERAL DIRECTORS & MONUMENTAL MASONS

A. G. DOWN

66 SOUTH STREET, BRIDPORT 01308 422643
ESTABLISHED IN 1946



Julian & Karen Hussey DipFD NAFD Jasmine & George Hussey DipFD NAFD



Offices also at Dorchester, Axminster, Seaton,
Honiton & Ottery St. Mary
Pre-arranged & prepaid funeral plans

Printed by **Creeds**
DESIGN AND PRINT

T: **01308 423411**
W: **www.creedsuk.com**

Twist and Shout Osteopathic Health Centre

If your back goes out
more than you do,
contact us for help
with muscular
aches and pains



www.lizaadams.co.uk
01308 427033 / 459996
32 South Street, Bridport DT6 3NQ

A J Wakely & Sons

*Independent Family
Funeral Directors*

Helping the bereaved of Bridport
for over 50 years

91 East Street, Bridport DT6 3LB
Tel: 01308 423 726

– 24 Hour Service –



Pre-payment plans available
Golden Charter
Funeral Plans



www.ajwakely.com

Please contact Simon Wakely, or a member of our
dedicated team for any advice or guidance.

CHIROPODIST / PODIATRIST

Stephen Waplington MSSCh/MBChA

Friendly, professional treatment
in the comfort of your own home

Please call 01308 456724

HPC registered – number 20529

The Chimney Keepers

Certified chimney sweep

HETAS approved

Power sweeping · Safety certificates issued

Bird-guard cowls fitted · CCTV inspections

01308 867486 / 07399 519717

www.thechimneykeepers.co.uk

